



Gunnebo SpeedStile FP

Full-Panel Speed Gate with Sliding Glass Barrier

GUNNEBO®

Technical Specifications

Standard Dimensions	Casework Length	57.2"	Walkway Width	22.0" std / 36.0" ada
	Casework Height	37.4"	Casework Width	11.8" std / 18.9" ada
	Glass Barrier Height	35.4" / 47.2" / 70.9"		
Orientation, Drive	Bi-Directional, Motorized			
Materials	Pedestal*	#4 grade stainless steel		
	Pedestal Lid*	#4 grade stainless steel		
	Barrier	0.5" thick tempered glass		
Drive Mechanism	The glass panels are moved by two linked mechanical arms. The arms are rotated by a torque shaft connected to the drive unit. The drive unit is a DC motor connected to a worm reduction gear and a bi-directional encoder. A microprocessor control system guarantees the precise movement and positioning of the wings. The opening and closing speed of the panels is adjustable. A safety photocell prevents the panels from closing on an obstruction. Should the normal panel operation encounter an obstruction, the controlling logic detects and abnormal condition and reverses.			
Function	Passage in both directions is electronically controlled. Default mode is Normally Closed (NC), and lane will open only upon acceptance of an authorized signal.			
Flow Rates	Up to 60 users per minute (approximate figures).			
Operation	On receiving a signal from the access control sytem or pushbutton, the panels open. If an unauthorized person tries to tailgate or enter from the opposite direction, the system detects the unauthorized passage and activates the built-in alarm system.			
Fire Alarm	Input facility, for voltage-free contact supplied by others to effect fail state.			
Power Supply	115VAC 60HZ (230VAC 50HZ available)			
Power Rating	Stand By 20VA; In Operation 120VA			
Logic Voltage	24VAC			
Power Loss	In a loss of power the battery backup will allow the panels to open (or close), stop, and become inactive intil power is restored.			

*As standard. See Accessories and Options for alternatives.

Operational Modes & Notifications

Interface

Potential free contact provided by either card reader or pushbutton input. Card reader inhibit and reset signals are available as standard. The unit has an adjustable time out facility if required; the go ahead symbol will be cancelled if the passage through the lane is not completed within a pre-set and field programmable time frame.

Operational Modes

Full-Time Barrier (Normally Closed Mode)

The swinging panels remain closed until a valid access control card is presented. Tailgaters and unauthorized entries are signaled by an alarm-type tone. If an unauthorized card is presented, the lane will sound an alarm and the panels will remain closed to prevent the user from proceeding further without intervention.

Standard Operating Modes

Switchable via optional pushbutton (DTC) or touchscreen (MP Touch) controller.

Enter/Card In	Reset
Exit/Card Out	Close
Free Exit/Card Out	

Pictogram Lights

LED display pictograms visually assist the user when passing through the unit. Included as standard.

Accessories & Options

Alternative Materials and Finishes Alternative materials, PUR RAL colors, finishes, and effects for casework, lid, and inlay.

Card Reader Options Custom integration of customer-supplied readers into pedestal lid. Proximity, magnetic stripe, biometric, and barcode readers all compatible.

Remote Lane Control Remote lane control via tablet or smartphone with Gunnebo EntraLinq; desktop pushbutton controller (DTC) or touchscreen controller (MP Touch) also available.

Alternative Mounting Specialized mounting base platforms giving concealed cableway and requiring no drilling, trenching, or core drilling to the floor.

Static Panels When extra space presents in a design, integrated or standalone barrier solutions can be provided.

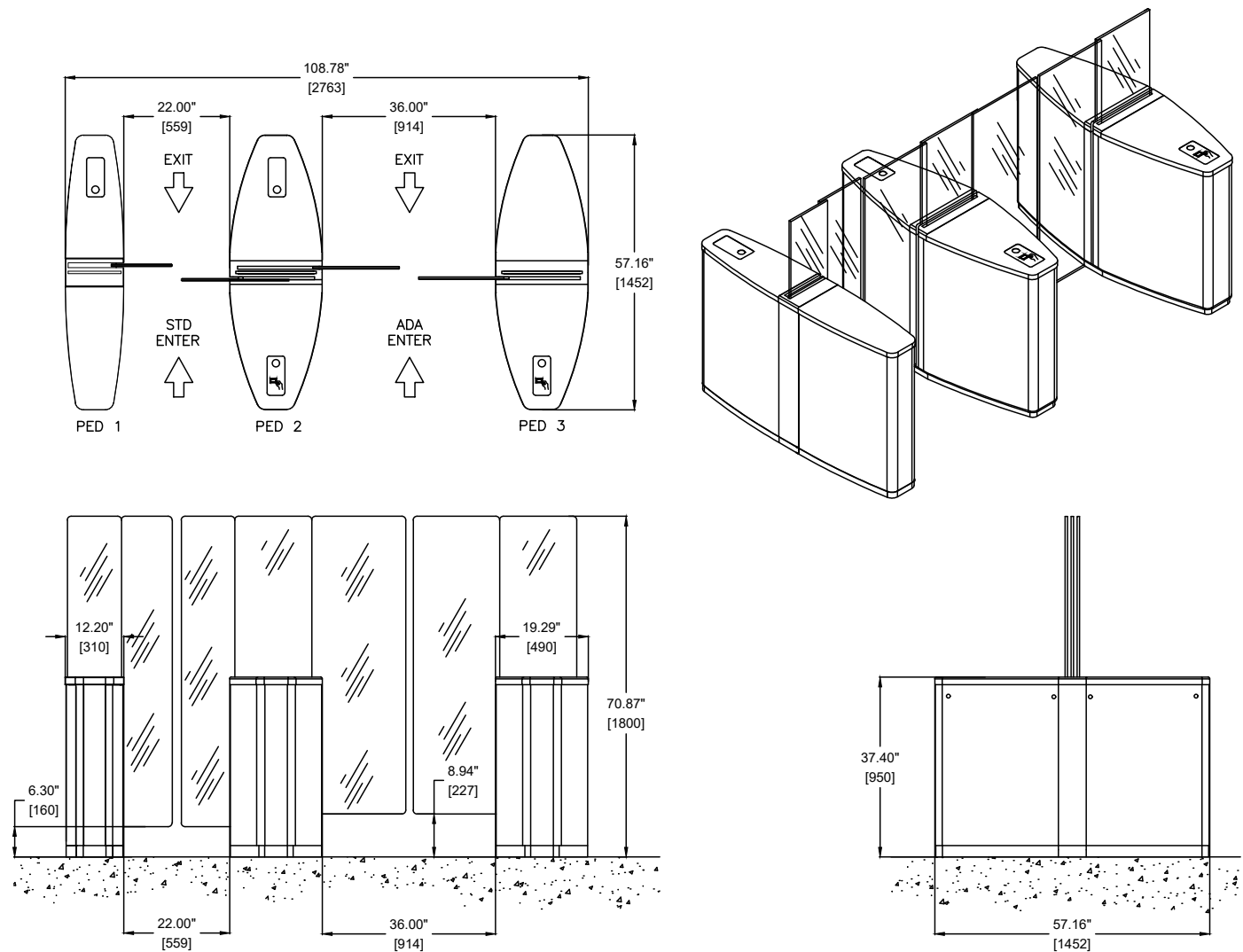
Elevator Destination Dispatch Mounting integration of customer-supplied LCD screens for elevator destination dispatch systems.



Standard Dimensions

Gunnebo SpeedStile FP

For installation details, please refer to the installation manual.



For further information, please contact:

Gunnebo Entrance Control Inc.

535 Getty Ct., Benicia, CA 94510

www.gunneboentrancesecurity.com

