

SlimStile BA

Tripod Turnstile for Internal Installation*

Tripod turnstiles are compact and cost-effective entrance control solutions designed for smooth and silent operation, less wear and tear and reduced power consumptions, suitable for areas where there is a large flow of people.

SlimStile BA is our stainless steel compact version of the tripod turnstile, offering high-operating reliability in a small casework for wall-mounted or pedestal installation, ideal for sites where space is an issue. The passage of one person at a time is allowed upon receiving a signal from the access control system. The status is shown on the LED waymode indicators on the entry and exit side.

Passage in both directions is electronically controlled. The SlimStile BA is available in Normally Closed (N/C) configuration to lock the mechanism until a valid authorization signal is received, or in Normally Open (N/O) configuration to lock the mechanism in the event of attempted unauthorized entry. The N/O configuration also allows reduced power consumption and increases the life of the mechanism and passage of throughput speed. In case of emergency, the hub can freely rotate to allow an easier exit. The drop arm option can also be chosen, which automatically drops the horizontal arm to allow free passage. LED waymode indicators are included as standard.

(* External installation allowed under canopy.



SlimStile BA

Tripod Turnstile for Internal Installation

Technical Specifications

Drive

Hand operated

Materials

Casework:	304 grade grained stainless steel
Casework Lid:	304 grade grained stainless steel
Tripod Hub:	Cast aluminum with painted gray finish
Tripod Arms:	304 polished stainless steel; 1.50" diameter, 18.90" long

Mechanism

Electro-mechanical head mechanism:

- Positive locking action for one passage at a time
- Self-centering mechanism to ensure complete rotation into the home position
- Hydraulic damper to ensure a smooth operation
- Anti-backup device to prevent reverse rotation once the mechanism has moved 60° from rest position

Power Failure / Fire Alarm

The rotor wings remain locked in the fail-lock configuration (not recommended for FP and FG models to not trap people in the dead area) or can freely rotate in the fail-safe configuration. Fail-Lock or Fail-Safe configuration is available in one or both directions and must be specified at time of order placement. Note that head mechanism fail state will be the same as power failure choice. Input facility is available for voltage free contact to effect fire alarm fail state (COMR1 interface required).

Interface

LL2001Lite microprocessor control logic:

- One input for opening/locking the mechanism in each direction
- Two protected outputs for control of opening/locking
- Four protected outputs for piloting way mode indicators
- Two protected output relays indicating availability of use or counting passage in either direction
- Two protected outputs to count passage in either direction
- Two open collector NPN outputs to count passage or to indicate availability of use in either direction or activate the optional drop arm feature
- Serial port: RS485

MODELS

- Pedestal-mounted
- Wall-mounted

OPTIONS

- Card reader mounting
- Push button console
- MP2000 Remote console
- Status lights pictogram
- RS485 serial interface
- LCD Counter
- Drop arm

BENEFITS

- High-operating ability in a small casework
- Small footprint
- Smooth and silent operation

APPLICATIONS

- Government
- Retail
- Finance
- Telecommunications
- IT
- Banking
- Publishing
- Leisure
- Petrochemical
- Education

SlimStile BA

Tripod Turnstile for Internal Installation

Technical Specifications



TECHNICAL DATA

Dimensions	See details on next page
Power Supply	230Vac 50 Hz or 115Vac 60 Hz
Power Rating	50VA (standby 5VA if Normally Open)
Operating Temperature	23° to 122°F (RH 95% not condensing)
IP rating / MCBF / MTTR	IP 44 / 10M cycles (12 M if Normally Open) / less than 30 min
Flow Rates (approximate figures):	
	Insertion Type Reader: 20 passages per minute
	Swipe Type Reader: 30 passages per minute
	Proximity Reader: "Hands Free": 40 passages per minute

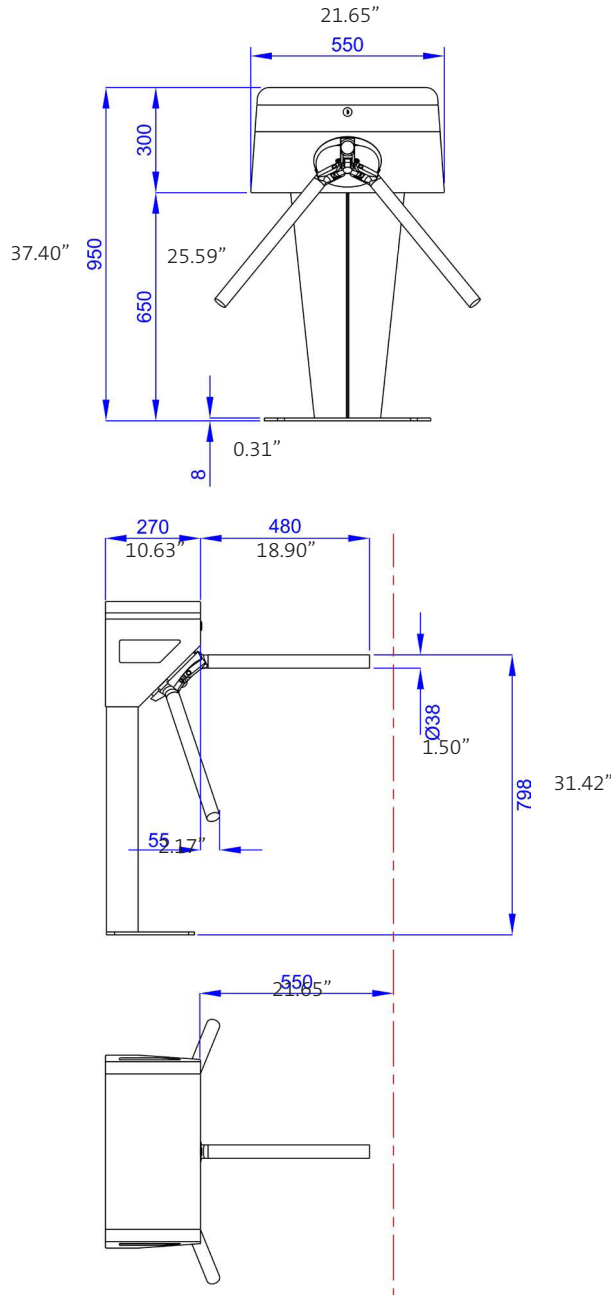
SlimStile BA

Tripod Turnstile for Internal Installation

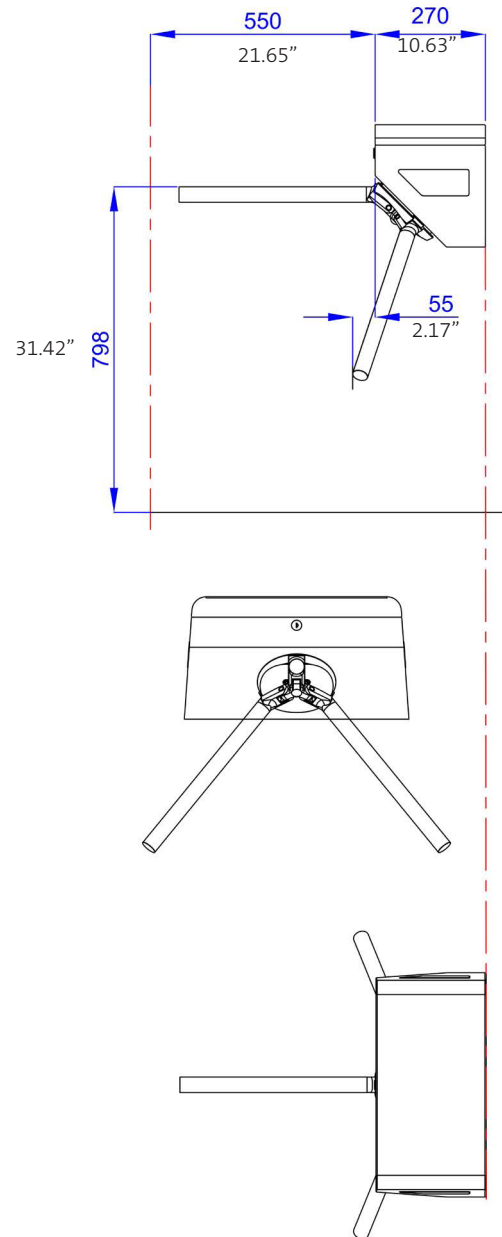
Site Preparation

Product is delivered fully assembled and may require lifting equipment. For installation details, please refer to the installation manual. Approx. weight: 88lb (pedestal-mounted version); 57lb (wall-mounted version).

Pedestal-Mounted Version



Wall-Mounted Version



Concrete Base to specification at least fck (cube) 30N/mm² of resistance. Base to be flat and level to +/- 0.20" (5mm) over footprint area. Dimensions to be > 27.56" (700mm) x 19.69" (500mm) x 5.91" (150mm) deep min.

SlimStile BA

Tripod Turnstile for Internal Installation

IMPORTANT

- Any horizontal pipe or conduit running below the Tripod Turnstile must be at least 5.51" (140mm) below FFL.
- Metal conduit for cables should be raised at least 1.97" (50mm) from foundation.
- It is the customer's responsibility to ensure the structural integrity and strength of the installation location.
- The dimensions given in this Product Datasheet are for information only. In order to prepare the installation site, please refer to your usual Gunnebo Customer Service contact.

For further information, please contact:

Gunnebo Entrance Control Inc.
535 Getty Ct., Benicia, CA 94510
Tel: 513-666-4821
Email: info@gunnebo.us
www.gunneboentrancesecurity.com

Gunnebo Entrance Control, Inc. is a company within the Gunnebo Group:

Gunnebo AB
Box 5181 SE-402 26 Goteborg, Sweden
Tel: +46 31 83 68 00
www.gunnebo.com

Note: In pursuit of its policy of continuous refinement and improvement, Gunnebo Entrance Control reserves the right to modify design and details at any time and without notice.